

Catalogue 2025

Setting the standard for panel mounting



MARINE - ARCHITECTURAL - FURNITURE - RV


FASTMOUNT
PANEL MOUNTING SOLUTIONS

Spirit 111 by Spirit Yachts
Photo: Spirit Yachts / Waterline Media

Welcome to Fastmount panel mounting solutions.

Panel mounting solution:
PC-F1A - ceiling panel
PC-M2H - ceiling substrate
LP-F8 - wall panel

LP-M8A - wall substrate
MC-M5 - floor panel
MC-F5 - floor substrate

A photograph of a modern, curved interior space, likely a lounge or bar area. The walls and ceiling are finished with wood paneling. A curved wooden structure, possibly a bar or seating area, is visible. The lighting is warm and ambient, with recessed lights in the ceiling and a circular skylight. The overall design is sleek and contemporary.

Designed for removable panels in the marine, architectural, furniture and RV industries, the award winning Fastmount hidden mounting system delivers a flawless finish with perfect alignment every time.

The secret to Fastmount is the unique range of hidden clips ideal for secure fastening of removable panels. With Fastmount, interior panels can be easily removed and refitted in any sequence, time after time.

Combining speed, versatility and accuracy, the Fastmount system enables designers, installers and contractors to re-think the panelling process.

Whether you're mounting ceiling panels to wooden framework, heavyweight wall panels to aluminium profiles, or outdoor cushions to a seat, Fastmount has a hidden mounting system to suit your needs.

Fastmount is the original panel mounting solution designed to perform on sea, land and in the air. All of our systems are real world and third-party tested. Applications of use are only limited by your imagination.

Naturalis Biodiversity Centre,
Leiden, Netherlands

Panelling,
limited only by
your imagination.



Perfect Alignment



Easy Installation



Less Downtime



Easily Removed



Safe and Secure

BENEFITS

- No visible fixings
- Allows for repeated removal and replacement of panels
- Eliminates panel damage – install panels during final build stages
- Variety of mounting options – self tapping, glue and screw fix
- Allows for panel flex and expansion
- Provides cavities for services and enhanced acoustics

APPLICATIONS

- Ceilings, walls, feature panels, furniture and upholstery
- Access, inspection and ventilation panels
- Interior and selected exterior applications
- Upholstered, painted, prefinished, composite and acoustic panels
- Mounts into a wide variety of substrates e.g. GRP, composite, honeycomb, aluminium
- New build, refit and upgrades



Panel mounting solution:
PC-F1A - substrate
PC-VMX - panel

CONTENTS

Standard PC Range	5
Low Profile LP Range	7
Very Low Profile VL Range	9
Metal MC Range	11
Stratlock SL Range	13
PanelSafe PS Range	15
Textile TC Range	18
Fastmount Tools Range	19

S/Y Ngoni, Royal Huisman
Photo: Breedmedia

The Standard range,
for a finish that's anything
but standard.

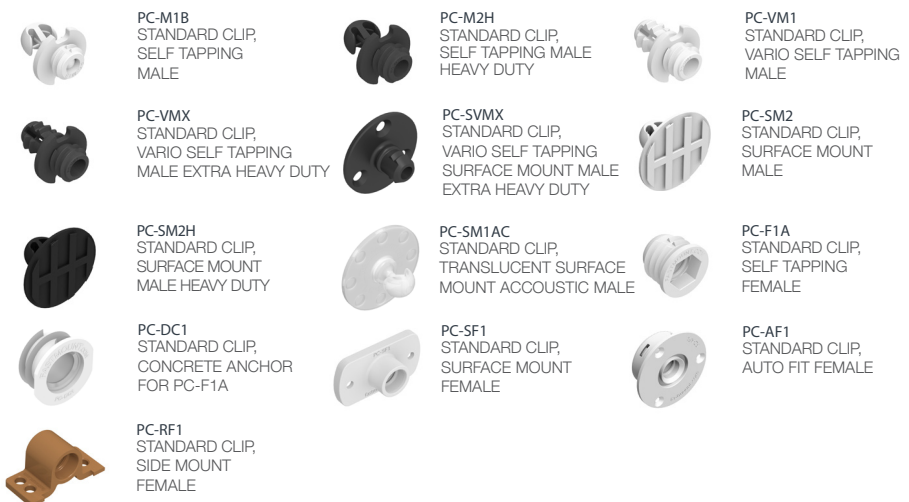
Panel mounting solution:
PC-F1A - substrate
PC-M2H - panel



STANDARD PC RANGE

The Standard Range offers hidden panel mounting solutions for a variety of applications, and includes self-tapping, screw and adhesive fix options. Pull-out loads vary from 5-15kg, depending on the male clip used. The Standard Range is ideal for mounting wall and ceiling panels where the standoff between frame and panel does not need to be kept to a minimum. Male and female clips are interchangeable within the range.

Common uses: *Wall and ceiling panels, acoustic panels, prefabricated panels and seat backs.*



ASB Bank, New Zealand

Change
panels

whenever
you want.



Panel mounting solution:
LP-DF8 - drywall
LP-SM8AS - panel



LOW PROFILE LP RANGE

The Low Profile Range offers self-tapping, screw and adhesive fix clips for mounting wall panels that require less space between panel and substrate. Available in 5-15kg pull out loads depending on the male clip used.

The Low Profile Range is ideal for mounting wall panels, with female clips specifically designed to self-tap into curved substrates, drywall and MDF or foam core.

Common uses: *Mounting decorative wall panels to drywall substrates, curved panels to curved walls, and non-upholstered panels to walls.*



LP-M8A
LOW PROFILE CLIP,
SELF TAPPING MALE



LP-SM8AS
LOW PROFILE CLIP,
SURFACE MOUNT MALE



LP-SM8H
LOW PROFILE CLIP,
SURFACE MOUNT
MALE



LP-SMX
LOW PROFILE
SURFACE MOUNT
MALE HEAVY DUTY



LP-F8
LOW PROFILE CLIP,
SELF TAPPING FEMALE



LP-DF8
LOW PROFILE CLIP,
SELF TAPPING COARSE
THREAD FEMALE



LP-AF8A
LOW PROFILE AUTO
FIT FEMALE

Simply easy.



Panel mounting solution:
VL-F3H - substrate
VL-M3H - panel



VERY LOW PROFILE VL RANGE

The Very Low Profile Range offers the least space between panel and substrate, and is suited to very thin substrates and/or panels with no special tools required for installation. Clips can be recessed, screw, rivet or adhesive fixed. Pull-out loads vary from 5-10kg per clip set, with a certified fire-rated version available.

Common uses: *Thin upholstered plywood panels, signage, aluminium honeycomb panels.*



VL-M3
VERY LOW PROFILE
MALE CLIP



VL-M3H
VERY LOW PROFILE
HEAVY DUTY MALE CLIP



VL-M3FR
VERY LOW PROFILE
FIRE-RATED MALE CLIP



VL-F3
VERY LOW PROFILE
FEMALE CLIP



VL-F3H
VERY LOW PROFILE
HEAVY DUTY FEMALE CLIP



VL-F3FR
VERY LOW PROFILE
FIRE-RATED FEMALE CLIP



VL-M3X
VERY LOW PROFILE
EXTRA HEAVY DUTY

Baltic 108 WINWIN
Photo: Jeff Brown

Heavy-duty,
with fire-resistance.

When you have a heavy duty application that requires fire rating plus heavy load bearing, the Fastmount Metal Range is up to the job. Able to hold up to 50kg per m², heavy panels can be mounted accurately and safely.

Panel mounting solution:
MC-M5 - floor panel
MC-F5 - substrate



METAL MC RANGE

The Metal Range is recommended for more heavy-duty applications that require a robust hidden fixing. Self-tapping, screw or rivet and self-adhesive fix options are available, with pull-out loads of 5kg or 10kg depending on clips used. Stainless Steel clip set (patent pending) has been designed for high fire resistance and durability, and can be used on ceiling and wall panels.

Common uses: *heavyweight wall and ceiling panels, fire-rated panels and egress paths, metal panels.*



MC-SSM10
STAINLESS STEEL
CLIP MALE



MC-SSF10
STAINLESS STEEL
CLIP FEMALE



MC-M5
METAL CLIP SELF
TAPPING MALE



MC-F5
METAL CLIP SELF
TAPPING FEMALE



MC-F10
METAL CLIP SELF
TAPPING FEMALE
10KG



MC-SM5
METAL MALE
SURFACE MOUNT,
SCREW



MC-SM5-VHBF
METAL MALE
SURFACE MOUNT,
ADHESIVE



FASTMOUNT
SL-C-WC90

REINFORCE

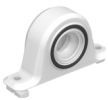
Achieve perfection
with adjustable,
effortless installation.



STRATLOCK SL RANGE

The Stratlock Range is a heavy-duty panel mounting solution for mounting heavy interior panels onto aluminium U channel, timber battens, Stratlock Rail or direct onto plywood, designed specifically for the contract interior fitout industry. With no special installation tools required, the Stratlock Range is a hidden fixing that installs rapidly into the framework and panel, provides supported adjustment of the panel before locking into place, and boasts our highest shear strength and pull out load of 18kg.

Typical applications include: *Heavy wall and ceiling panels in the interiors of hotels, hospitals, retail and residential.*



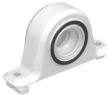
SL-FA
STRATLOCK FEMALE
SIDE MOUNT CLIP



SL-FA-FR
STRATLOCK FEMALE
FIRE RATED SIDE
MOUNT CLIP



SL-FB
STRATLOCK FEMALE
FRONT MOUNT CLIP



SL-SFA
FEMALE SIDE MOUNT
CLIP FOR TIMBER
FRAMEWORK



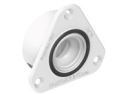
SL-SFA-FR
FEMALE FIRE RATED
SIDE MOUNT CLIP FOR
TIMBER FRAMEWORK



SL-FB-FR
STRATLOCK FEMALE
FRONT MOUNT CLIP
FIRE RATED



SL-FC
STRATLOCK FEMALE
FLUSH MOUNT CLIP



SL-FC-FR
STRATLOCK FEMALE
FIRE RATED FLUSH
MOUNT CLIP



SL-SMT1
STRATLOCK SIDE
MOUNT



SL-M10
STRATLOCK MALE
CLIP 10KG



SL-M18
STRATLOCK MALE
CLIP 18KG



SL-M18-FR
STRATLOCK MALE
CLIP 18KG FIRE
RATED



SL-C-WC90-FR
STRATLOCK PLASTIC
WALL TO CEILING,
WALL TO WALL
CONNECTOR



SL-C-WW90-FR
STRATLOCK PLASTIC
90° CONNECTOR

Coming soon



SL-RCF90
STRATLOCK 90°
RAIL CONNECTOR



SL-RLE
STRATLOCK RAIL
EXTRUSION



Peace of mind.
Guaranteed.

Seismic restraint providing added security and control. The panel is suspended below the ceiling for convenient servicing behind the panel or controlled removal of the panel by releasing the wire.



PANELSAFE PS RANGE

PanelSafe restraint systems provide added security and control to panel removal.

With the use of the PanelSafe, a panel can be suspended below the ceiling for convenient servicing behind the panel or controlled removal of the panel. Suitable for use with the PC, LP, VL, MC and SL clip ranges.

Ideal for: Inspection panels, large and/or heavy ceiling panels. To ensure quality installation and performance, installation and removal tools are available.

Note: Custom products have a three week lead time.



PS-150
PANELSAFE



PS-150E
PANELSAFE EASY
FIT SELF TAPPING



PS-S150E
PANELSAFE EASY FIT
SURFACE MOUNT



PS-SR225S
SEISMOUNT
GALVANISED STEEL



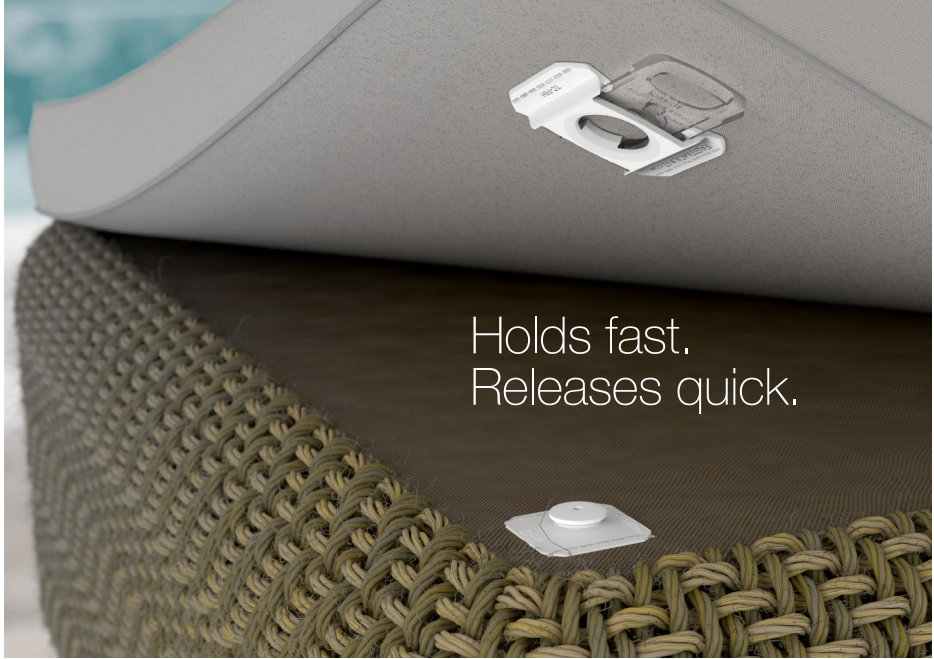
PS-SR225SS
SEISMOUNT
STAINLESS STEEL

Soft furnishings,
fitted hard
and fast.



Photograph: Galeon Yachts

Panel mounting solution:
TC-F6H - soft textile
TC-M6 - deck



Holds fast.
Releases quick.

TEXTILE TC RANGE

The Textile Range is designed for mounting soft textiles to fabrics and hard surfaces in both interior and exterior settings with clip sets holding up to a 32kg break out load. Utilising a simple slide lock system, the Textile Range offers hidden and secure cushion fastening.

Typical applications include: *Sun loungers, exterior cushions on superyachts, seat bases and backs. Patent Pending.*

TEXTILE TC UPHOLSTERY RANGE



TC-F6H
TEXTILE CLIP
FEMALE
HEAVY DUTY



TC-M6
TEXTILE CLIP MALE
- SCREW FIX



TC-SM6S
TEXTILE CLIP MALE,
SEW ON



TC-SM6
TEXTILE CLIP MALE
- VHB TAPE FIX

TEXTILE TC CARPET RANGE



TC-CM3
CARPET CLIP MALE



TC-CSM3
CARPET CLIP MALE,
ADHESIVE MOUNT



TC-CF3
CARPET CLIP
FEMALE



Extra heavy duty
mounting, made simple.

Panel mounting solution:
PC-SF1 - substrate
PC-SVMX - panel

FASTMOUNT TOOLS RANGE

To achieve a quality installation and perfect finish with mounted panels, use the appropriate installation and removal tools below for the different clip ranges.



CP-01ST
STANDARD RANGE
CENTRE POINT



CP-08ST
LOW PROFILE CLIP
CENTRE POINT



VL-CP3
VERY LOW PROFILE
CENTRE POINT



MC-CP5
METAL CLIP
CENTRE POINT



MC-SSCP
STAINLESS STEEL CLIP
CENTRE POINT



TC-CP6H
TEXTILE RANGE
CENTRE POINT



VL-SS3
VERY LOW PROFILE
STAINLESS STEEL
SCREW



CT-09DG
DRILL GAUGE
FOR USE WITH CT-09
DRILL BIT



CT-01
DRILL 10MM WITH
SHOULDER



CT-09
PANEL DRILL 10MM
FORSTNER TYPE



CT-07
CARBIDE TIP STEP
DRILL



CT-13A
CARBIDE TIP STEP
DRILL – 16.8 DIA
FOR PC-F1A



CT-15
TAP FOR PC-F1A



CT-22
TAP FOR MALE TAP
FOR MALE SELF-
TAPPING CLIPS



CT-03
INSTALL TOOL FOR
PC-F1A



CT-10
INSTALL TOOL SELF
TAPPING MALE CLIPS
(ALUMINIUM)



CT-19
INSTALL TOOL LOW
PROFILE RANGE
(ALUMINIUM)



CT-12
31MM HSS
COUNTERSINK
DRILL BIT



MC-IT5
INSTALL TOOL FOR
METAL CLIPS



CT-18DG
DRILL GUIDE
INSTALLATION JIG



CT-05
PANEL REMOVAL
TOOL



CT-05H
PANEL REMOVAL
TOOL WITH HOOK



CT-17
PANEL REMOVAL
TOOL PAINTED PANEL
(GLASS SUCKER 40KG)



CT-08
YARD KIT 6 TOOLS




LP-08Y
YARD KIT
LOW PROFILE



CT-06S
SERVICE KIT



The secret behind
a perfect finish.



Panel mounting solution:
PC-F1A - substrate
PC-M1B - panel

AUTHORISED DISTRIBUTORS

AUSTRALIA

MarineWare
+61 (7) 5502 8966
Titus Tekform Pty Ltd
+61 (02) 9826 0007

**BAHRAIN, KUWAIT,
SAUDI ARABIA & UAE**
Exalto Emirates LLC
+971 (0)6 545 3366

BELGIUM

Domarine
+33(6)72 808 185
Kroon B.V.
+31 (0) 598-858585

BRAZIL

I-Sea
+5511 9 9922.5505

CANADA

Western Marine
+1 604 253 3322
Sugatsune Canada Inc
+1-514-312-5267

CHILE

Rce latam
+56 9 3467 9401

CHINA

Sugatsune Shanghai
+86-21-3632-1858 extn 802

CROATIA

Yachthings
+385 52 63 56 15

CZECH REPUBLIC

Bovelo Trading Sro
+ 420 733 234 476

DENMARK

HF Industri & Marine
+45 6220 1312

ESTONIA

Gamma Baltic OÜ
+372 6459757

FINLAND

MarineMan Oy
+358 10 4235220

FRANCE, ALGERIA,
MONACO, TUNISIA,
LUXEMBOURG,
FRENCH POLYNESIA &
FRENCH CARRIBEAN
Domarine
+33(6)72 808 185

GERMANY

Lindemann
+4940 2111 97 800

GREECE

VIOTAP
+30 210 24 65 510

HUNGARY

Kerimpex Kft.
+36 1 3330010

INDIA

Sugatsune Kogyo India
+91-22-2831-4490 & 4491

IRELAND

Panel Mounting Systems &
Architectural Components
+44 28 411 23284

ISRAEL

Multitech Hardware Line Ltd
+972 525 122188

ITALY, AUSTRIA,
SWITZERLAND
& LIECHTENSTEIN

Promotech Italia Srl
+39 0584 55 026

JAPAN

Sugatsune Co Ltd
+81 (03) 3866-2267

KOREA

Young & Sun Int'l Inc.
+82 31 716 7994

LATVIA

Gamma Fittings SIA
+371 25606633

LITHUANIA

UAB Furnitanas
+37052323052

NETHERLANDS

Kroon B.V.
+31 (0) 598-858585

NEW ZEALAND
Fastmount HQ
+64 21 502 895

POLAND

Nowacore
+48 504 071 930

SINGAPORE

Beltiston Ventures Pte Ltd
+65 6367 3148

SOUTH AFRICA

Dynamic Supply Systems (DSS)
+27 (0)82 387 5324

SPAIN

Riviera Trade
+34 606 959 967

SWEDEN

HF Marin Sweden AB
+46 550 77 11 11

TAIWAN

Asia Connect
+886 07 2229224

THAILAND

Brand House Asia
+66 (0)76527 772

TURKEY

Neva Marine
+90 (216) 447 0600

UK

Sugatsune Kogyo(UK) Ltd
+44 (0) 1189 272 955

UKRAINE

Mebelnye Technology
+380444923000

USA

Spradling Int'l Marine
+1 800 967 7753

Sugatsune America
+1 800-562-5267



For more information about our products, use cases and technical documents, please visit our website.

Find out more at fastmount.com



FASTMOUNT

PANEL MOUNTING SOLUTIONS

Our mission is to enable the creation of beautiful, elegant and functional design finishes for panels and furniture by simplifying the processes of installation, usage and removal of surfaces.

Fastmount panel mounting solutions ensure a perfect alignment and flawless finish, every time.

20 years experience, 130 million clips sold, global distribution network in 50 countries.

Visit fastmount.com to see new products, download CAD files or find your nearest distributor.



Proudly designed & manufactured in New Zealand